

# The Queen's Maids



Approximate Design Area 16in x 19.5in (41cm x 50cm)

This Blackwork/Cross stitch design contains a chart and instructions and can be stitched on 14 count Aida or 28 count Evenweave



Published by Catkin Embroidery Designs  
31 Cleeve Road, Knowle, Bristol BS4 2JR  
Tel: (0117) 971 5802 Fax (0117) 914 7160



## Catkin Embroidery Designs Blackwork Instructions

### General

In order to maintain an even tension it is advisable to use an embroidery frame or hoop. If you are leaving your work for some time, remember to release the fabric from the frame to prevent it being marked. In Blackwork it is essential to avoid carrying threads a long distance across the back of the fabric as it shows through the completed work.

### Getting Started

**Bind, tape or zig-zag** raw edges of material to prevent fraying. Fold the material into four, horizontally and vertically and pinch centre to mark design-starting point. Sort and identify threads; daylight is best for this. The six stranded thread can be separated into 1 or 2 strands as required. It is inadvisable to use lengths of more than 20 inches.

**Start working your design from the middle** so that it is centred on your material. Do not start with a knot. Blackwork consists of an outline usually in 2 strands, with an infill pattern that is usually in 1 strand. This is only a general rule and specific instructions for this design can be found in the design notes. It is a matter of personal preference whether the outline or the infill pattern is stitched first. For those who prefer to stitch the outline first it will be necessary to find the centre of the fabric and count squares (Aida) or threads (Evenweave) outwards to reach a starting point.

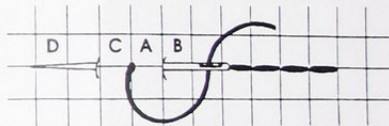
Please remember to weave loose threads into the back of the finished work to prevent them showing through the design when framed. Since Blackwork has so many areas of blank fabric incorporated into the design there is more danger of this happening than in any other embroidery techniques.

### Stitches

Note that the stitches below are illustrated on 14 count Aida, where the squares can be easily seen on the fabric. In the case of 28 count Evenweave or Jobelan remember to stitch over 2 x 2 threads.

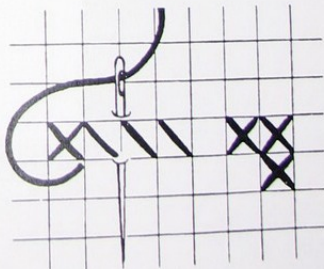
#### Back stitch

Represented by lines on the chart and can be stitched horizontally, vertically or diagonally. Bring needle up at **A**, down at **B**, up at **C**, down at **A** and up at **D**. Continue until outline is completed.



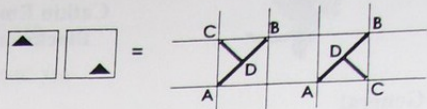
#### Cross stitch

The colour used is indicated by the symbol in the square which can be identified from the Chart Key. The direction these are worked in is not important PROVIDED all the top stitches are worked in the same direction i.e. left to right or right to left.



### 1/2 Cross-stitches

If the symbol is in the corner of the square with a diagonal line across the square, it indicates a half stitch. Bring the needle up at corner **A** and then diagonally down at the opposite corner **B**. Next bring the needle up at **C** and down at **D** in the centre of the square.



### Beads

Where a design uses beads, these are attached by a diagonal stitch through the bead in a single strand of toning cotton, using a beading needle or crewel No. 8.

### Special Aftercare Instructions

Natural oils from the skin may discolour the fabric after a time under glass. It is recommended that the work be gently hand washed in luke- warm water, using a mild detergent( non- biological and bleach free) rinsed well before excess water is squeezed out onto a towel. Whilst damp, iron face down on a thick towel. This prevents the stitching being flattened. Metallic threads and beads should have work covered with a cloth before being ironed face down.

We hope you enjoy working this design. A catalogue of other designs is available from the address below.



Catkin Designs  
31 Cleeve Road,  
Knowle,  
BRISTOL BS4 2JR.

## The Queen's Maids

Approximate Design Size 16 ins x 19.5 ins (41cm x 50cm)

This design can be stitched on 14 count aida or 27/28 count evenweave over 2 x 2 threads and is stitched in Blackwork (worked in backstich or stab-stitch) and cross-stitch. The 4 small arrows, one appearing at the edge of each of 4 pages of the chart, are to enable you to centre the design on your fabric. Please note that to make moving from 1 page of the chart to another easier there is a **2 line shaded overlap** on pages 2-9, where the adjoining 2 lines from the previous page are duplicated.

### General

In the Blackwork part of the design the thicker lines, usually outlines are stitched in 2 strands of the appropriate colour, the thinner lines e.g. the infill patterns are stitched in 1 strand. Where darker lines appear over the infill pattern these should be put in after the underlying infill pattern is completed.

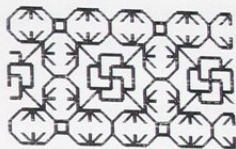
**Cross-stitches** are in 2 strands of the thread shown in the key. Where a half-stitch is used, a diagonal line is shown across the square with the appropriate symbol behind it.

### Blackwork

Unless otherwise stated all stitching is in 1 or 2 strands of Black -DMC 310. Outlining -the thicker line is in 2 strands, the thinner line in 1 strand. Exceptions to this rule are printed below.

#### Lady Seated on Stool (on left)

The infill pattern of her dress is in 1 strand of DMC 3799



The line of her **necklace** showing at the back of her neck is stitched in 1 strand of DMC 310 and 1 strand of Gold 7

#### Lady Standing (behind bench)

The infill pattern of her dress is in 1 strand of DMC 414



The chain of her necklace is stitched in 2 strands of Gold 7.

#### Lady in Centre (sitting on bench)

The infill pattern of her dress is in 1 strand of Of gold blending filament and 1 strand of DMC 310.



Her petticoat has an infill pattern of 1 strand of DMC 816



The chain of her necklace is stitched in 1 strand of DMC 310 and 1 strand of Gold 7.

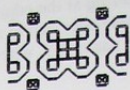
### Embroidered Cloth

The embroidery on the cloth is stitched in 1 strand of DMC 310.

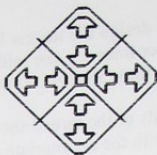
The **needles** are in 2 strands and the thread in 1 strand of DMC 310

### Lady on Right (seated on bench)

Her dress's infill pattern is in 1 strand of DMC 317



The infill pattern of her **petticoat** is in 1 strand of Gold Blending Filament and 1 strand of DMC 415.



Her necklace is stitched in 2 strands of Gold 7. The cross is stitched in 2 strands of DMC 310.

### Faces

Features are in 2 strands of DMC 310 EXCEPT for a few lighter lines round the eyes which are in 1 strand of the same.

### Bench

This is stitched in 2 strands of DMC 310

### Windows

These are stitched in 2 strands of DMC 3799 while the diamond pattern of the windows is in 1 strand of DMC 414



### Wood Panelling

The panelling of the walls is in 1 strand of DMC 3799

### Copyright Notice

All printed matter in this pack is the copyright of Catkin Embroidery Designs 2003 and may not be copied by any means or stored in any retrieval system without the express written permission of the publisher.

Cross Stitch in:

+	Yellow med	DMC Gold 7
■	Black	310
△	Steel Grey dk	414
◀▶	Steel Grey dk + Pewter Grey vy dk	414 + 3799
ℓ	Pearl Grey	415
/	Pearl Grey + Steel Grey dk	415 + 414
●	Garnet med	814
田	Pewter Grey vy dk	3799
◀	Pewter Grey vy dk + Black	3799 + 310

Back Stitch in:

_____	Yellow med	Gold 7
_____	Topaz vy lt + Black	Gold 7 + 310
_____	Yellow lt + Pearl Grey	Gold 7 + 415
_____	Black	310
_____	Pewter Grey	317
_____	Steel Grey dk	414
_____	Pearl Grey	415
_____	Pearl Grey + Steel Grey dk	415 + 414
_____	Garnet med	814
_____	Pewter Grey vy dk	3799
_____	Pewter Grey vy dk + Black	3799 + 310
_____		

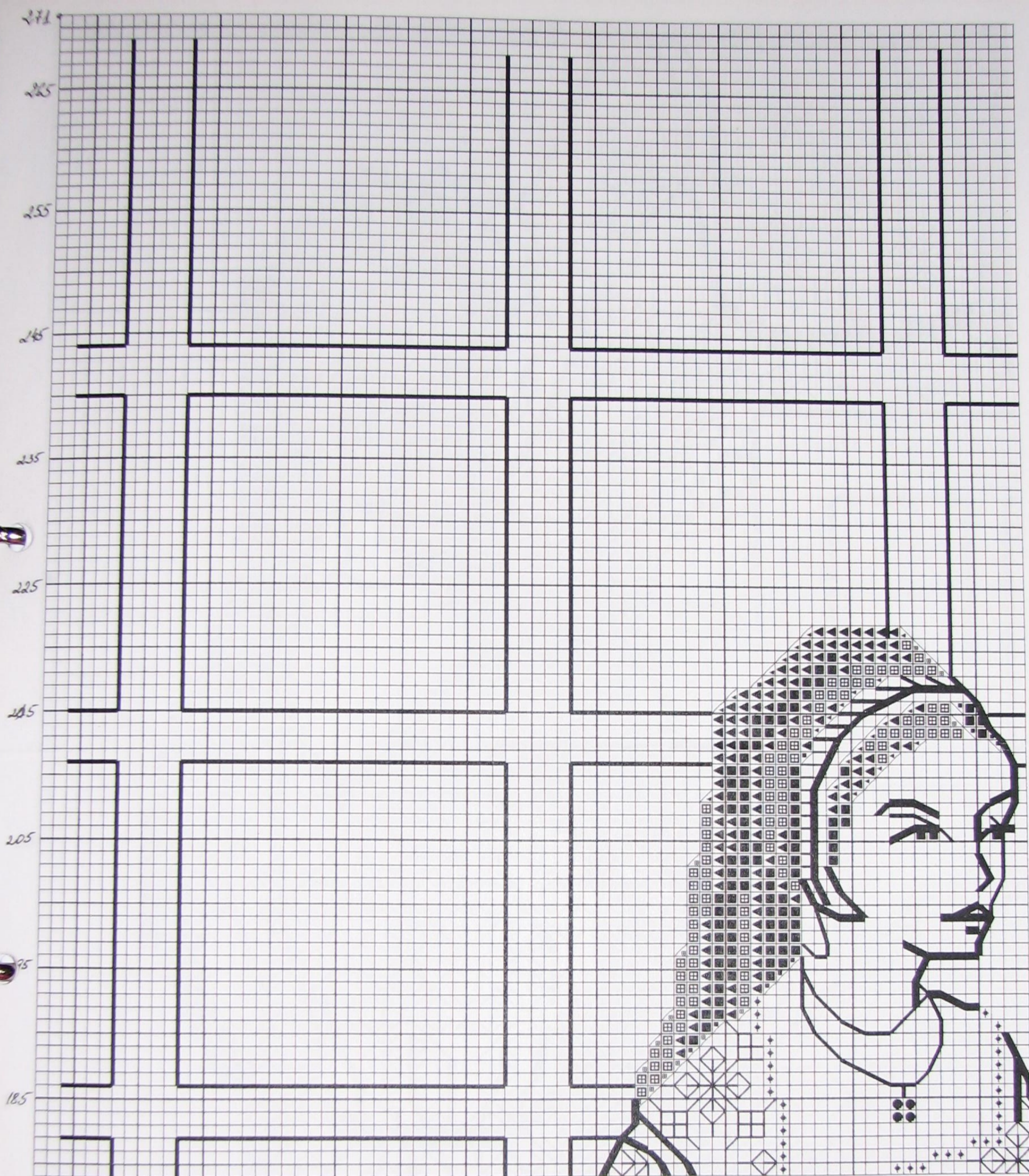
### **Additional Information**

The DMC threads used in this design are as follows: -

- 310 - Black - 18 metres
- 3799 - Dark Grey - 19 metres
- 317 - Pewter Grey - 4 metres
- 414- Steel Grey - 8 metres
- 415- Pearl Grey - 5 metres
- 814 - Burgundy - 3 metres

A 35 metre card of Madeira Glissengloss Gold 7 is also used although any other gold blending filament can be substituted if preferred..

Please note thread usage is approximate only and might have a slight variation depending on individual stitching methods.

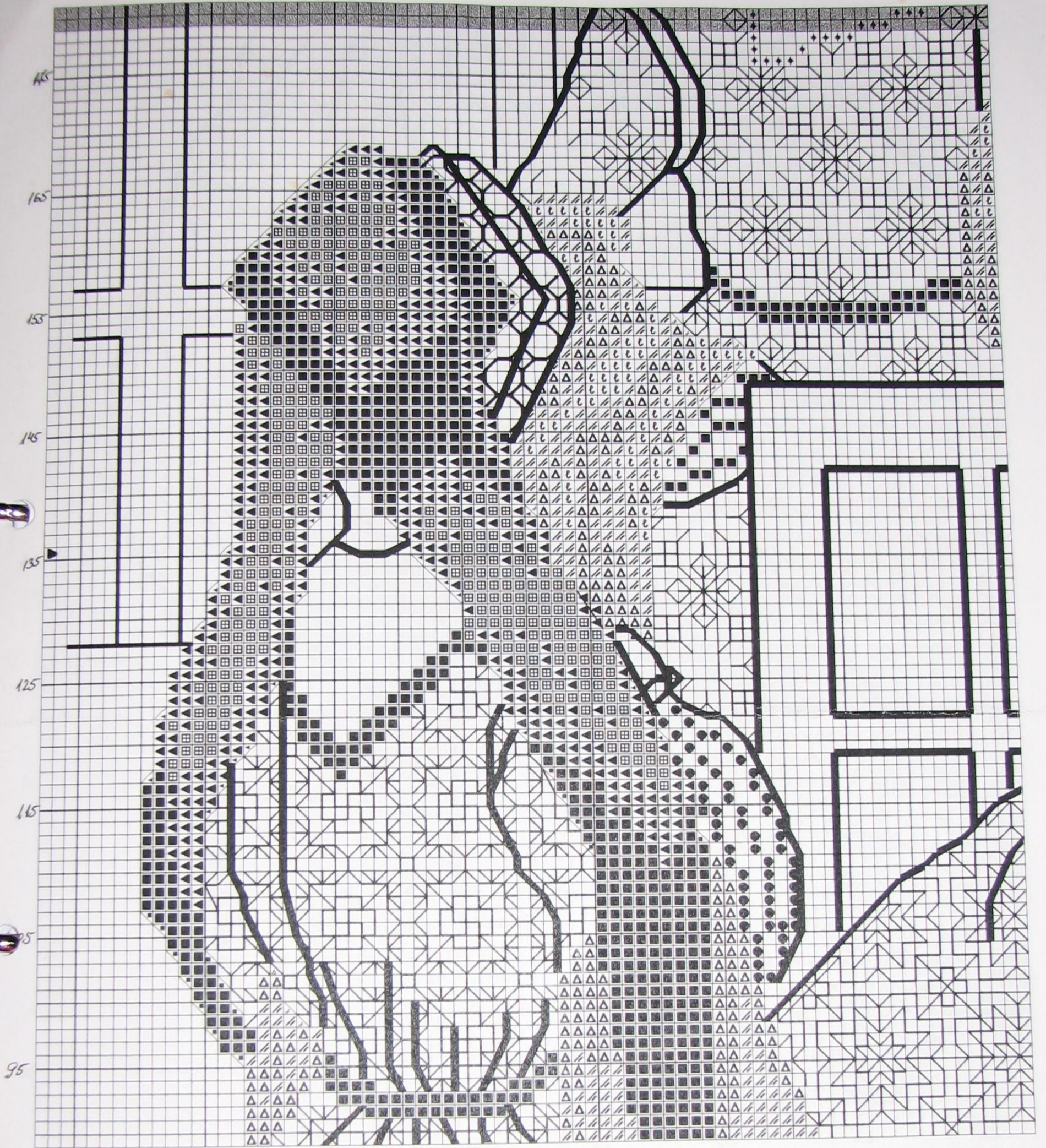


Catkin Embroidery Designs  
**The Queen's Maids**®



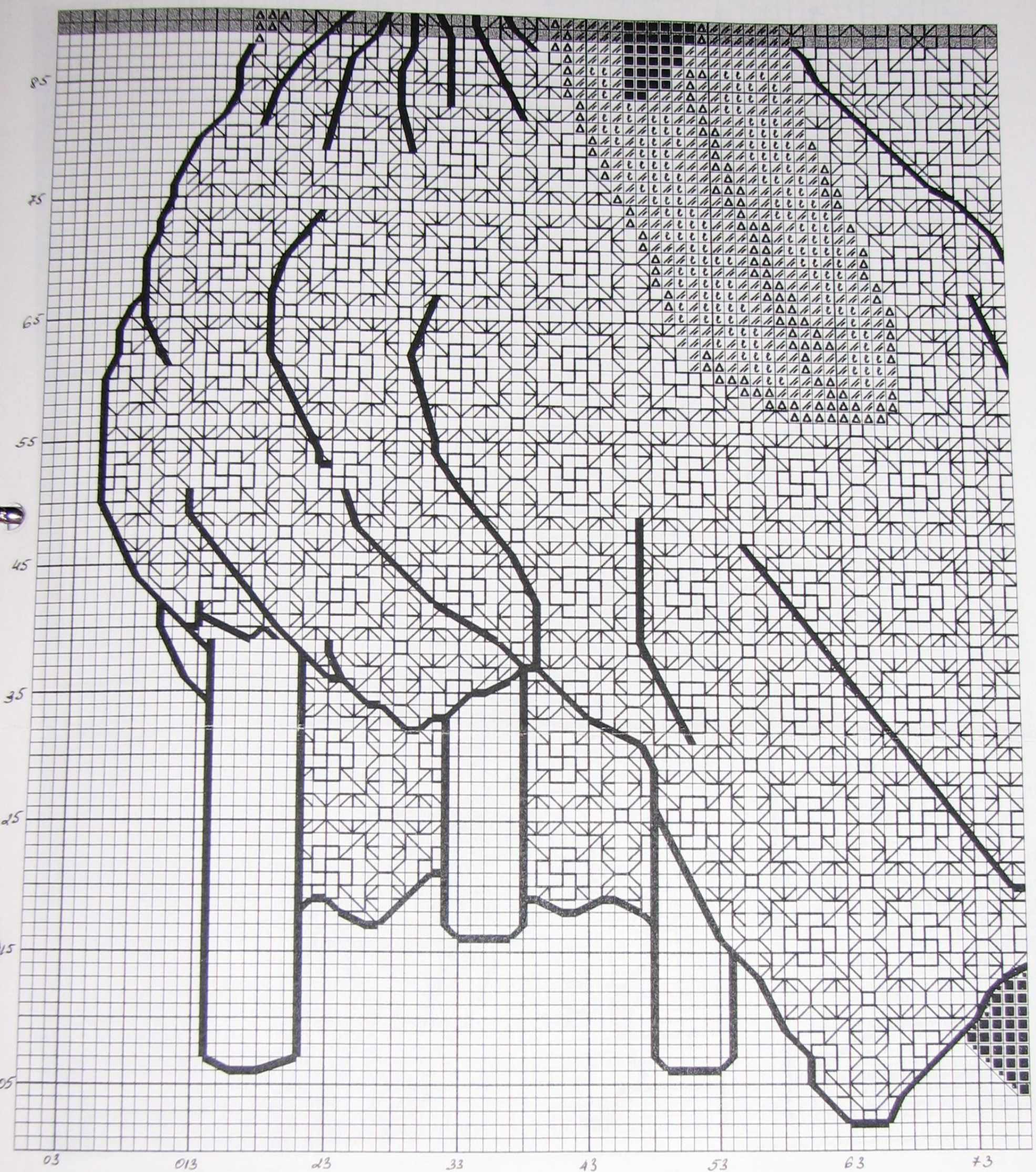
271 x 271





Catkin Embroidery Designs  
**The Queen's Maids**®





# Catkin Embroidery Designs

## The Queen's Maids.®





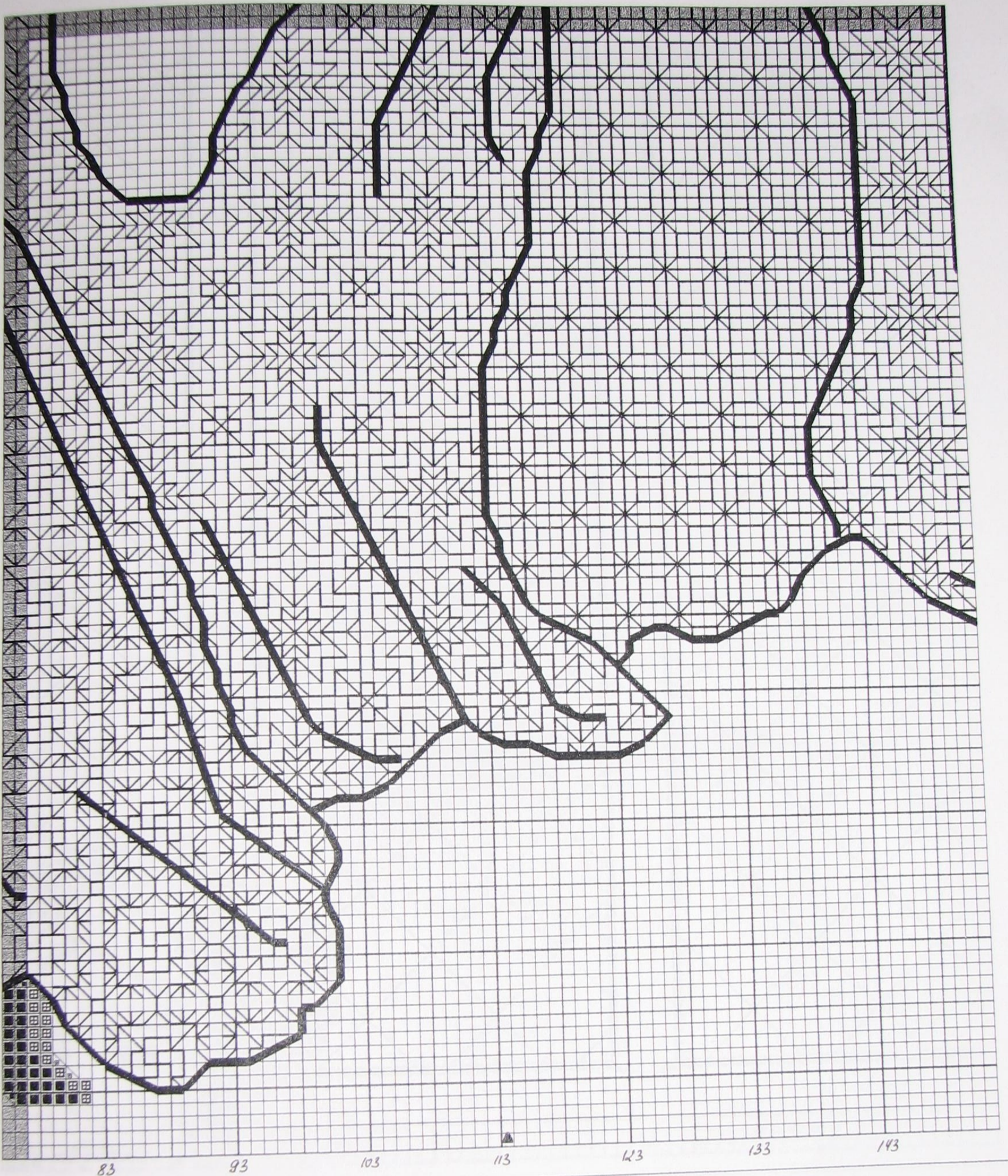
Catkin Embroidery Designs  
**The Queen's Maids**®





Catkin Embroidery Designs  
**The Queen's Maids<sup>©</sup>**

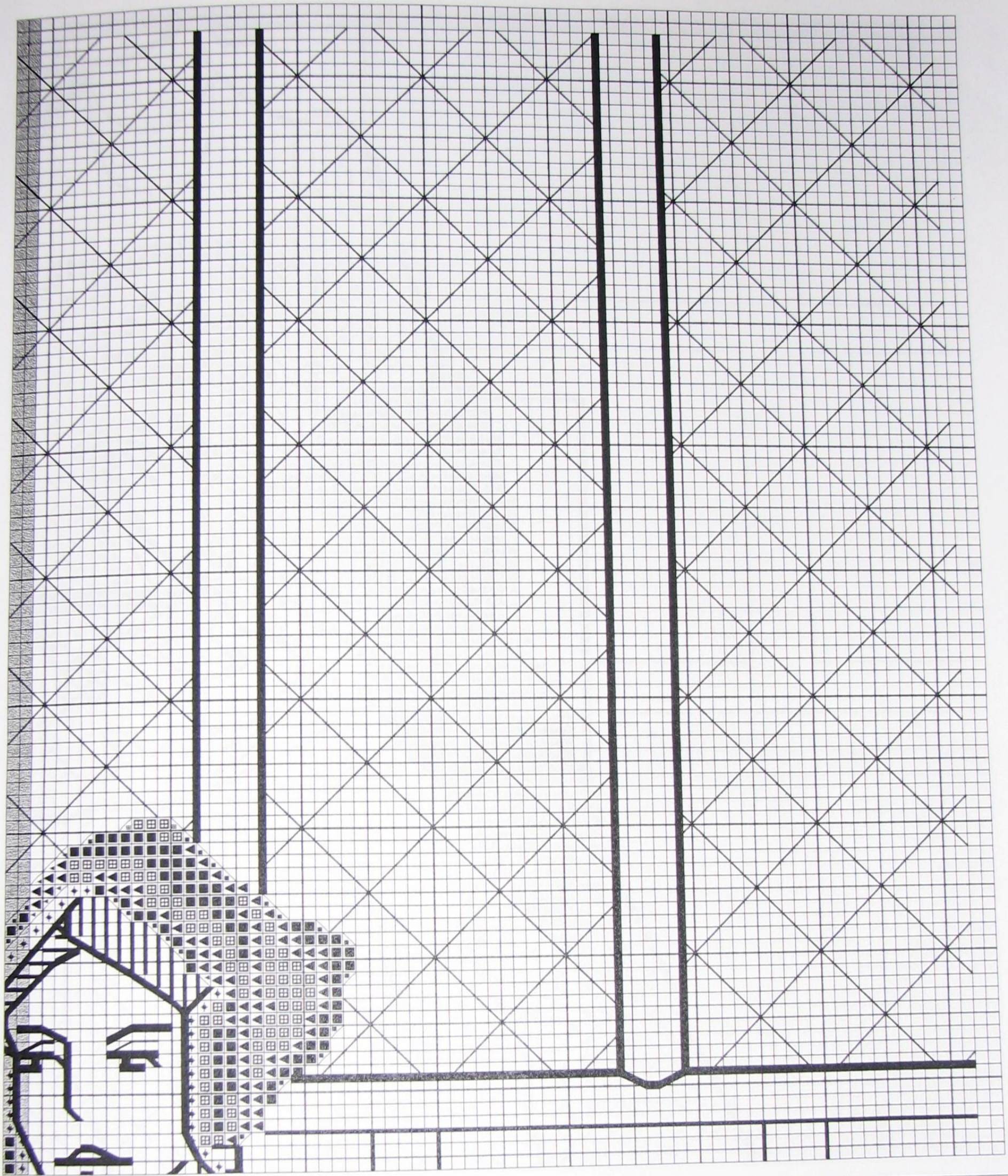




# Catkin Embroidery Designs

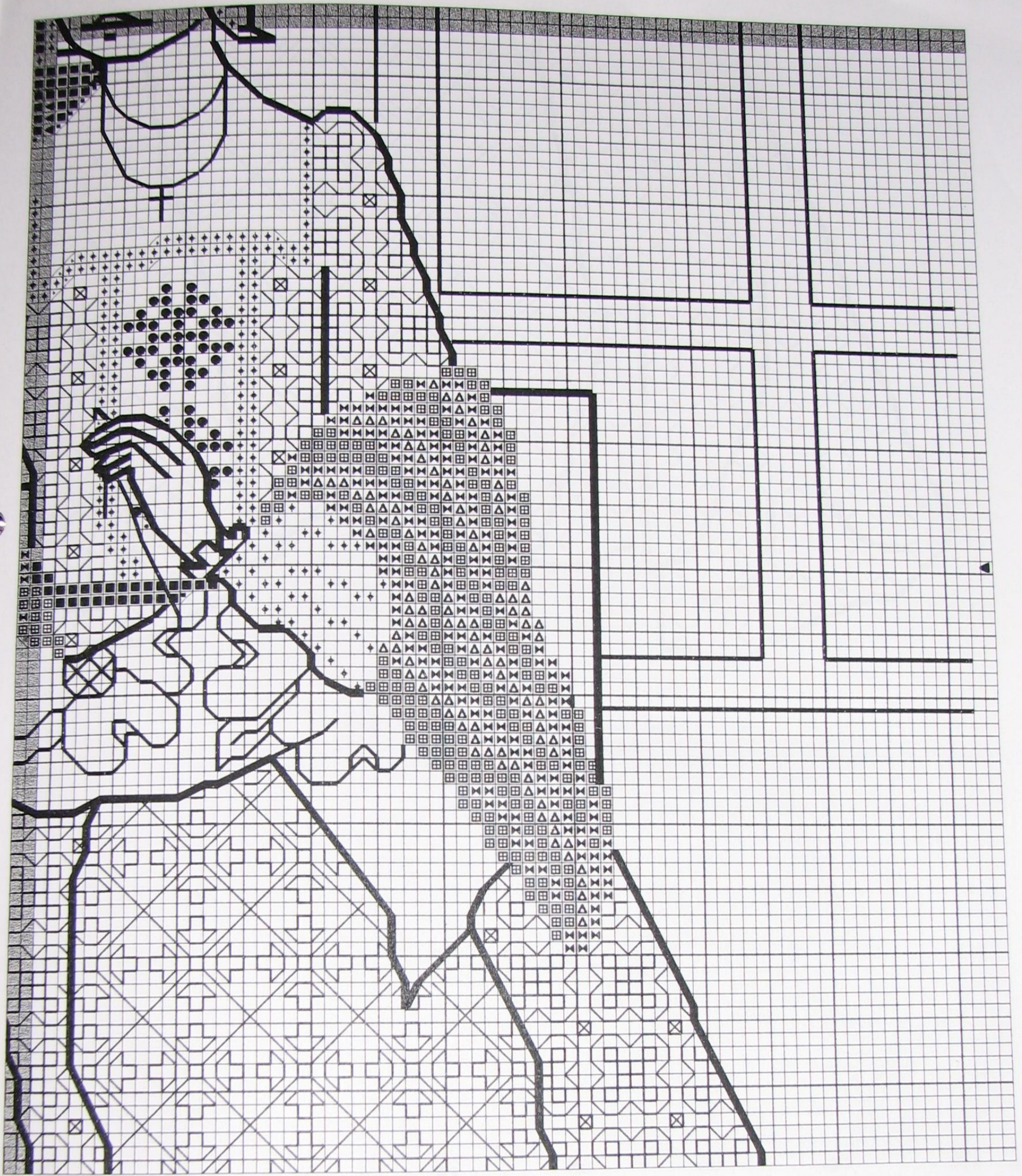
## The Queen's Maids<sup>®</sup>





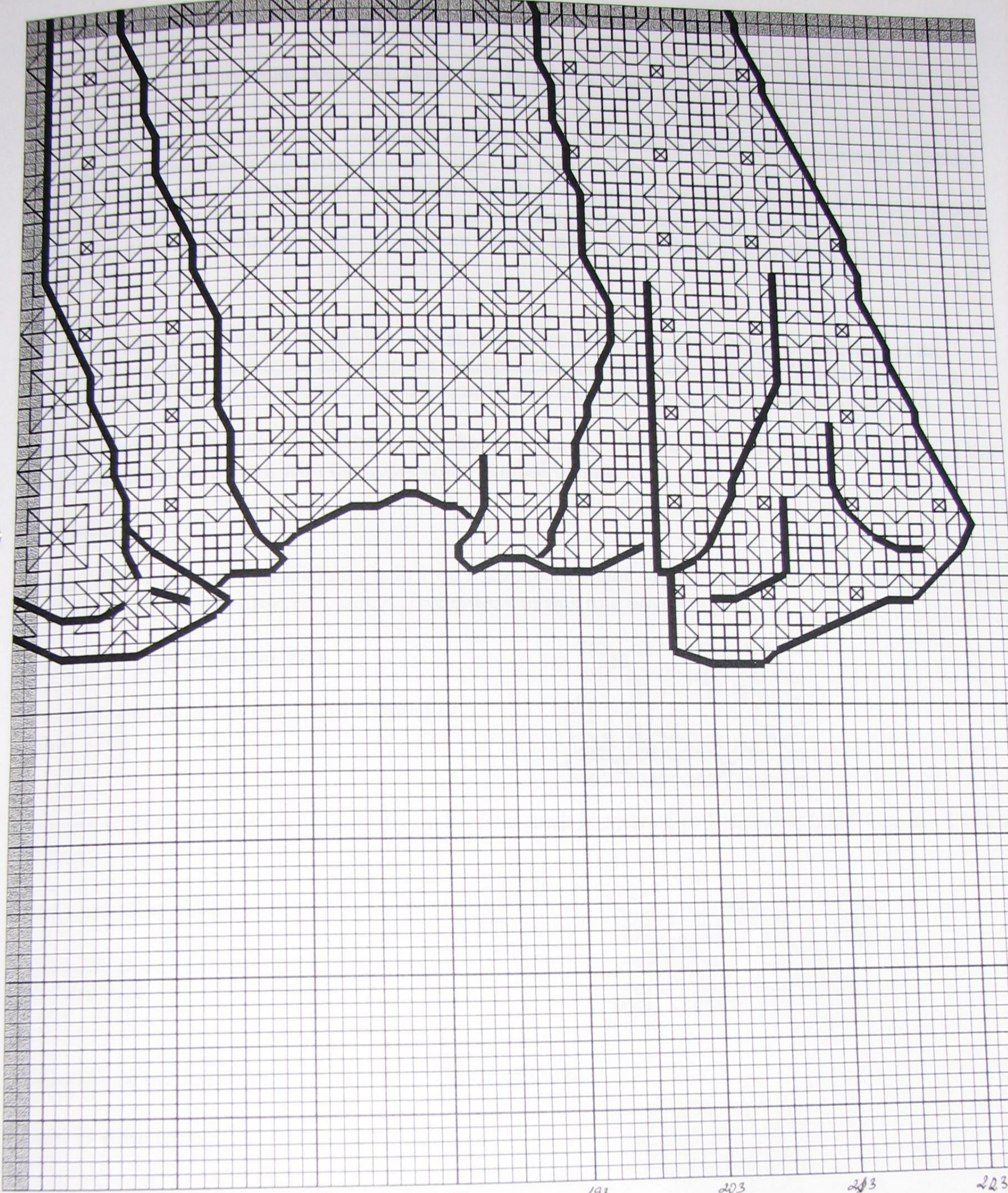
Catkin Embroidery Designs  
**The Queen's Maids**®





Catkin Embroidery Designs  
**The Queen's Maids.®**





153 163 173 183 193 203 213 223

# Catkin Embroidery Designs

## The Queen's Maids<sup>©</sup>

